



MIAMI-DADE COUNTY
 BUILDING CODE COMPLIANCE OFFICE (BCCO)
 PRODUCT CONTROL DIVISION

MIAMI-DADE COUNTY, FLORIDA
 METRO-DADE FLAGLER BUILDING

140 WEST FLAGLER STREET, SUITE 1603
 MIAMI, FLORIDA 33130-1563
 (305) 375-2901 FAX (305) 375-2908

www.miamidade.gov

NOTICE OF ACCEPTANCE (NOA)

CAT-5 Protection, Inc.
 160 S.W. 12th Avenue, #106
 Deerfield Beach, Florida 33442

SCOPE:

This NOA is being issued under the applicable rules and regulations governing the use of construction materials. The documentation submitted has been reviewed by Miami-Dade County Product Control Division and accepted by the Board of Rules and Appeals (BORA) to be used in Miami Dade County and other areas where allowed by the Authority Having Jurisdiction (AHJ).

This NOA shall not be valid after the expiration date stated below. The Miami-Dade County Product Control Division (In Miami Dade County) and/or the AHJ (in areas other than Miami Dade County) reserve the right to have this product or material tested for quality assurance purposes. If this product or material fails to perform in the accepted manner, the manufacturer will incur the expense of such testing and the AHJ may immediately revoke, modify, or suspend the use of such product or material within their jurisdiction. BORA reserves the right to revoke this acceptance, if it is determined by Miami-Dade County Product Control Division that this product or material fails to meet the requirements of the applicable building code.

This product is approved as described herein, and has been designed to comply with the High Velocity Hurricane Zone of the Florida Building Code.

DESCRIPTION: "CAT-5 Hurricane Net" Impact Resistant Wind Abatement System

APPROVAL DOCUMENT: Drawing No. 0108-092-1, titled " CAT-5 Hurricane Net Impact Resistant Wind Abatement System ", sheets 1 through 5 of 5, prepared by ING Consultants, Inc., dated 03/07/2008, signed and sealed by Jorge A. Pomerantz, P.E. on 07/09/2008, bearing Miami-Dade County Product Control Approval stamp with the Notice of Acceptance number and the approval date by the Miami-Dade County Product Control Division.

MISSILE IMPACT RATING: Large and Small Missile Impact

LABELING: Each panel of fabric shall bear a permanent label with the manufacturer's name or logo, city, state and the following statement: "Miami-Dade County Product Control Approved", unless otherwise noted herein.

RENEWAL of this NOA shall be considered after a renewal application has been filed and there has been no change in the applicable building code negatively affecting the performance of this product.

TERMINATION of this NOA will occur after the expiration date or if there has been a revision or change in the materials, use, and/or manufacture of the product or process. Misuse of this NOA as an endorsement of any product, for sales, advertising or any other purposes shall automatically terminate this NOA. Failure to comply with any section of this NOA shall be cause for termination and removal of NOA.

ADVERTISEMENT: The NOA number preceded by the words Miami-Dade County, Florida, and followed by the expiration date may be displayed in advertising literature. If any portion of the NOA is displayed, then it shall be done in its entirety.

INSPECTION: A copy of this entire NOA shall be provided to the user by the manufacturer or its distributors and shall be available for inspection at the job site at the request of the Building Official.

This NOA consists of this page 1, evidence submitted page E-1 as well as approval document mentioned above. The submitted documentation was reviewed by **Helmy A. Makar, P.E., M.S.**



Helmy A. Makar
 08/07/2008

NOA No. 08-0314.07
 Expiration Date: 08/07/2013
 Approval Date: 08/07/2008

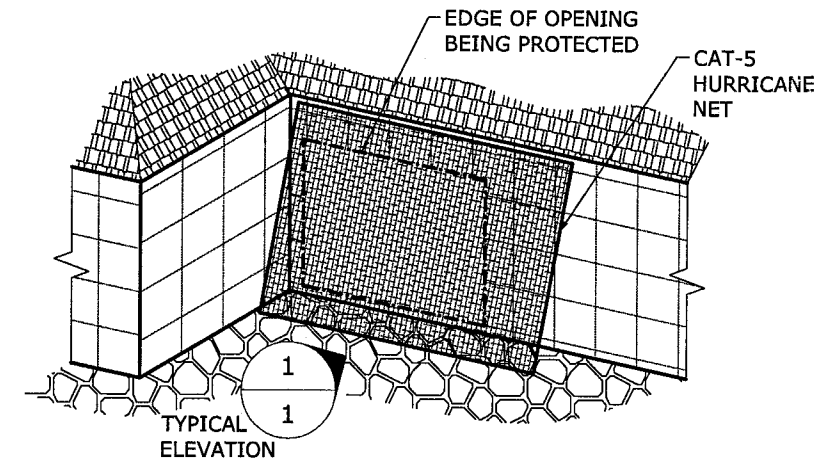
CAT-5 HURRICANE NET

IMPACT RESISTANT WIND ABATEMENT SYSTEM

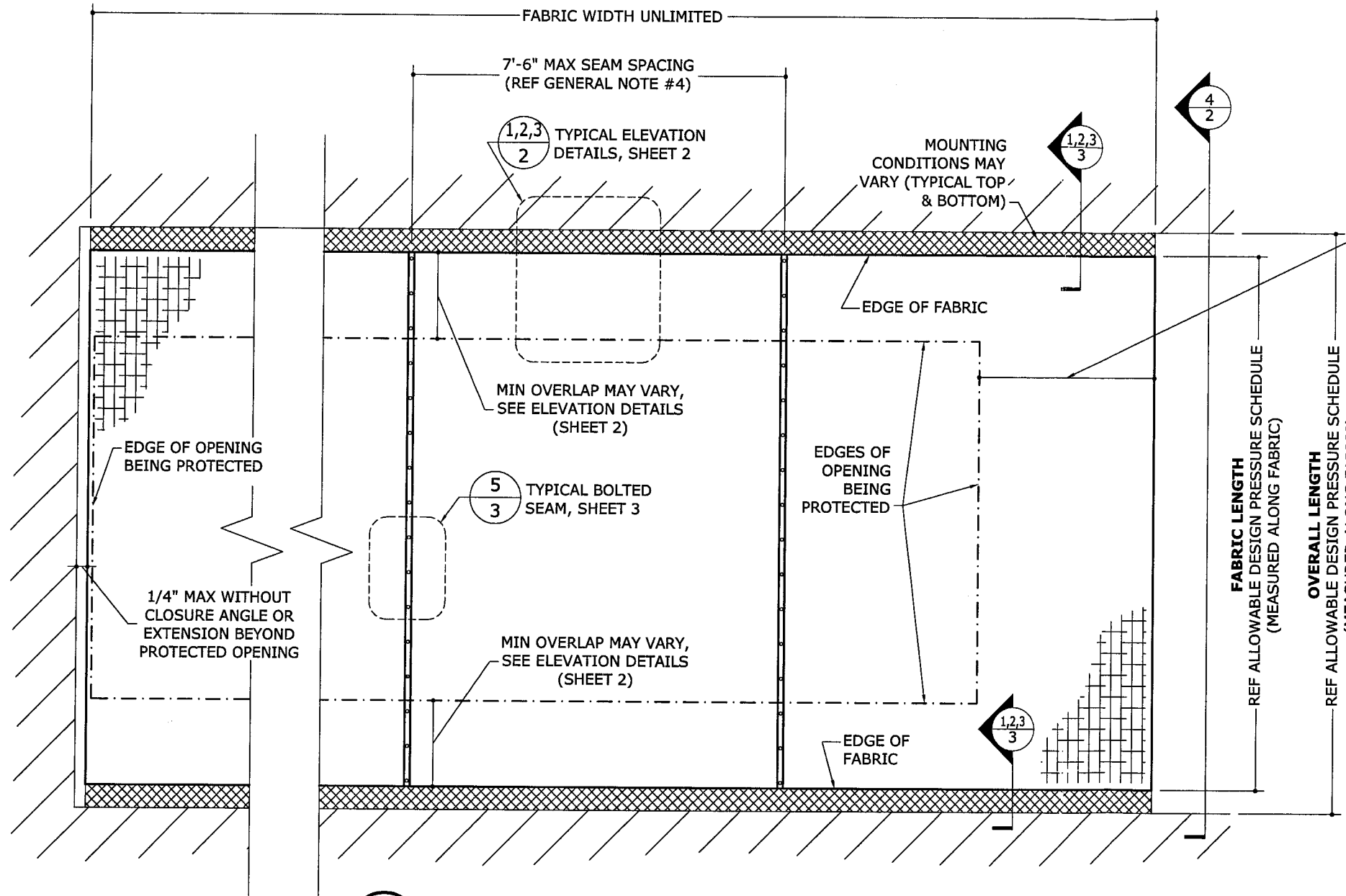
JORGE A. POMERANTZ, P.E.
PE 55326

07/09/2008
Pomerantz

INC Consultants, Inc.
428 NW 70TH AVE., #135
PLANTATION, FL 33317
(954) 394-8521
INGCONSULTANTS@YAHOO.COM
CERT OF AUTHORIZATION #27242



2 PERSPECTIVE REFERENCE
1 N.T.S. ISOMETRIC



1 TYPICAL ELEVATION
1 N.T.S. EXTER ELEV

DISTANCE BEYOND OPENING SHALL EQUAL 1.5 TIMES MAX HORIZONTAL PROJECTION AWAY FROM HOST STRUCTURE, OR FABRIC SHALL TERMINATE WITHIN 1/4" OF ADJACENT HOST STRUCTURE (TYP BOTH SIDES)

GENERAL NOTES

1. THE SYSTEM DESCRIBED HEREIN HAS BEEN DESIGNED AND TESTED IN ACCORDANCE WITH THE 2004 FLORIDA BUILDING CODE FOR USE WITHIN THE HIGH VELOCITY HURRICANE ZONE PER TAS 201, 202, & 203 TEST STANDARDS.
2. NO 33-1/3% INCREASE IN ALLOWABLE STRESS HAS BEEN USED IN THE DESIGN OF THIS SYSTEM. WIND LOAD DURATION FACTOR Cd=1.6 HAS BEEN USED FOR WOOD ANCHOR DESIGN. GRADE 2 DOUGLAS FIR OR SOUTHERN YELLOW PINE MINIMUM REQUIRED (G=0.55 MIN).
3. POSITIVE AND NEGATIVE DESIGN PRESSURES CALCULATED FOR USE WITH THIS SYSTEM SHALL BE DETERMINED BY OTHERS ON A JOB-SPECIFIC BASIS IN ACCORDANCE WITH THE GOVERNING CODE.
4. MULTIPLE UNITS MAY BE INSTALLED TO UNLIMITED WIDTH USING BOLTED SEAMS AS SHOWN. SEAM SPACING MAY BE LESS THAN THAT SHOWN, HOWEVER ALLOWABLE PRESSURES MUST BE REDUCED TO ACCOUNT FOR REDUCED POROSITY. A LICENSED ENGINEER OR REGISTERED ARCHITECT SHALL SUBMIT FOR ONE-TIME NOTICE OF ACCEPTANCE AND PREPARE SITE SPECIFIC DOCUMENTS FOR USE IN CONJUNCTION WITH THIS DOCUMENT.
5. THE SYSTEM DETAILED HEREIN IS GENERIC AND DOES NOT PROVIDE INFORMATION FOR A SPECIFIC SITE. FOR SITE CONDITIONS DIFFERENT FROM THE CONDITIONS DETAILED HEREIN, A LICENSED ENGINEER OR REGISTERED ARCHITECT SHALL SUBMIT FOR ONE-TIME NOTICE OF ACCEPTANCE AND PREPARE SITE SPECIFIC DOCUMENTS FOR USE IN CONJUNCTION WITH THIS DOCUMENT.
6. PERMIT HOLDER SHALL VERIFY THE ADEQUACY OF THE EXISTING STRUCTURE TO WITHSTAND SUPERIMPOSED LOADS AND CALCULATED REACTIONS.
7. TOP & BOTTOM DETAILS SHOWN MAY BE INTERCHANGED AS FIELD CONDITIONS DICTATE. PRODUCT MAY BE INSTALLED VERTICALLY OR HORIZONTALLY AS APPLICABLE.
8. FABRIC IS COMPOSED OF PLAIN WEAVE FABRIC CONSISTING OF 0.30" DIAMETER VINYL COATED DOUBLE DENIER STRAND POLYESTER CORE YARNS (70% PVC, 30% POLYESTER) IN WARP AND FILL. YARNS SHALL HAVE MIN 180 lbf TENSILE STRENGTH (GRAB AND STRIP) PER YARN. WARPS ARE AT 12 PER INCH AND FILLS ARE AT 9 PER INCH. THE FABRIC WEIGHS 13.2 OUNCES PER SQUARE YARD.
9. NYLON CLAMPS SHALL BE NYLON 6.6 WITH A TENSILE STRENGTH OF 7.98 KSI, FLEXURAL MODULUS OF 360 KSI, AND ELONGATION OF 5.6%.
10. ALL BOLTS & WASHERS SHALL BE ZINC COATED STEEL, GALVANIZED STEEL, OR STAINLESS STEEL WITH A MINIMUM TENSILE YIELD STRENGTH OF 60 KSI.

Approved as complying with the
Florida Building Code
Date 08/07/2008
NOA# 08-0314-07
Miami Dade Product Control
Division
By Helena A. [Signature]

CAT-5 PROTECTION, INC.
160 S.W. 12th AVENUE, #106
DEERFIELD BEACH, FL 33442
www.hurricane-net.com
CAT-5 HURRICANE NET
IMPACT RESISTANT WIND ABATEMENT SYSTEM
MIAMI-DADE NOTICE OF ACCEPTANCE

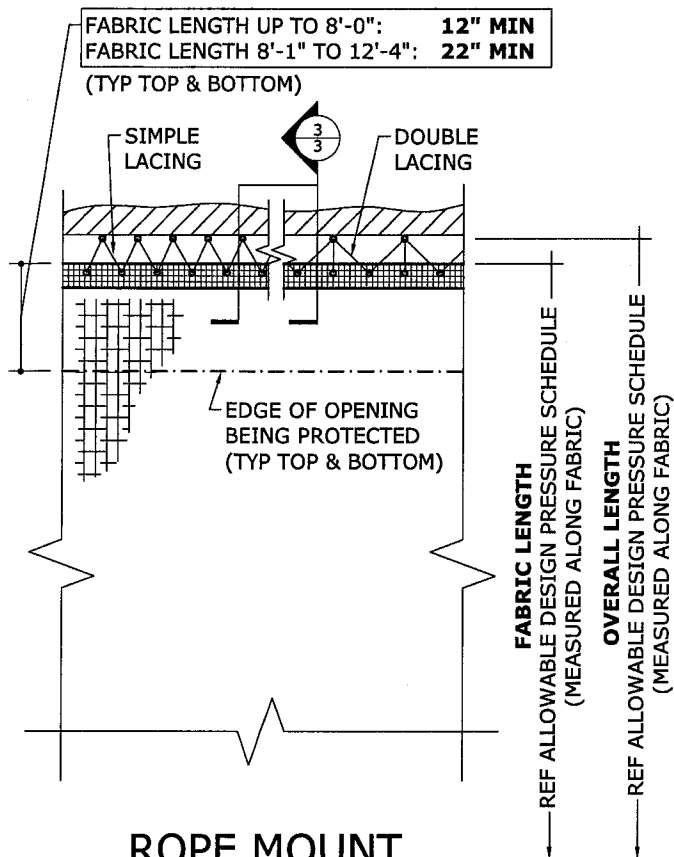
REMARKS	DATE
INITIAL ISSUE	03/07/08
DRWN	CL
CHKD	JP

0108-092-1

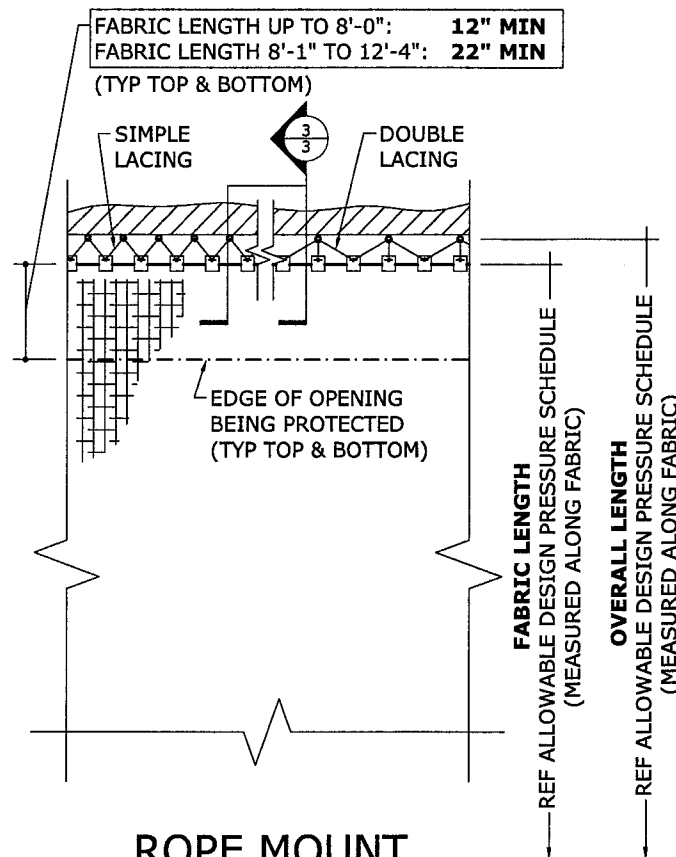
SCALE:
PAGE DESCRIPTION:

ELEVATION DETAILS

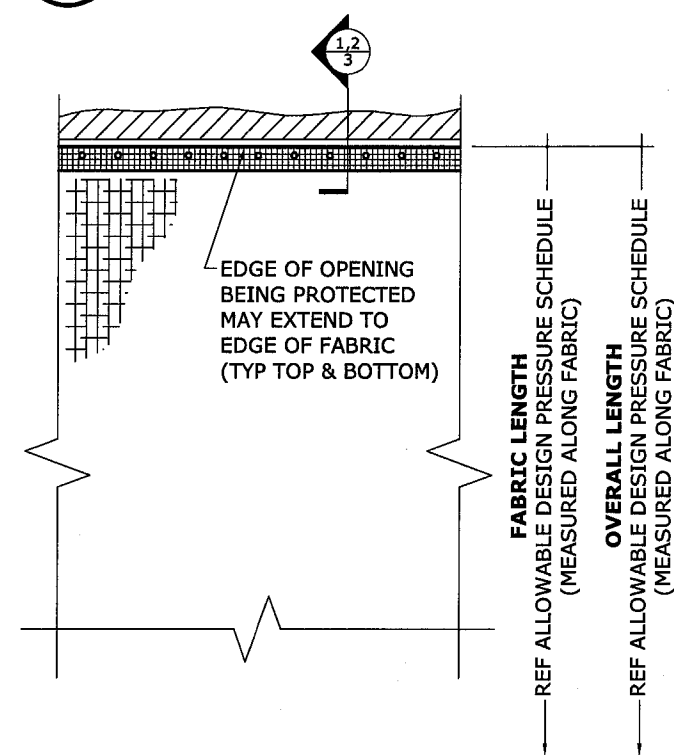
(BOTTOM MOUNTING CONDITIONS SIMILAR)



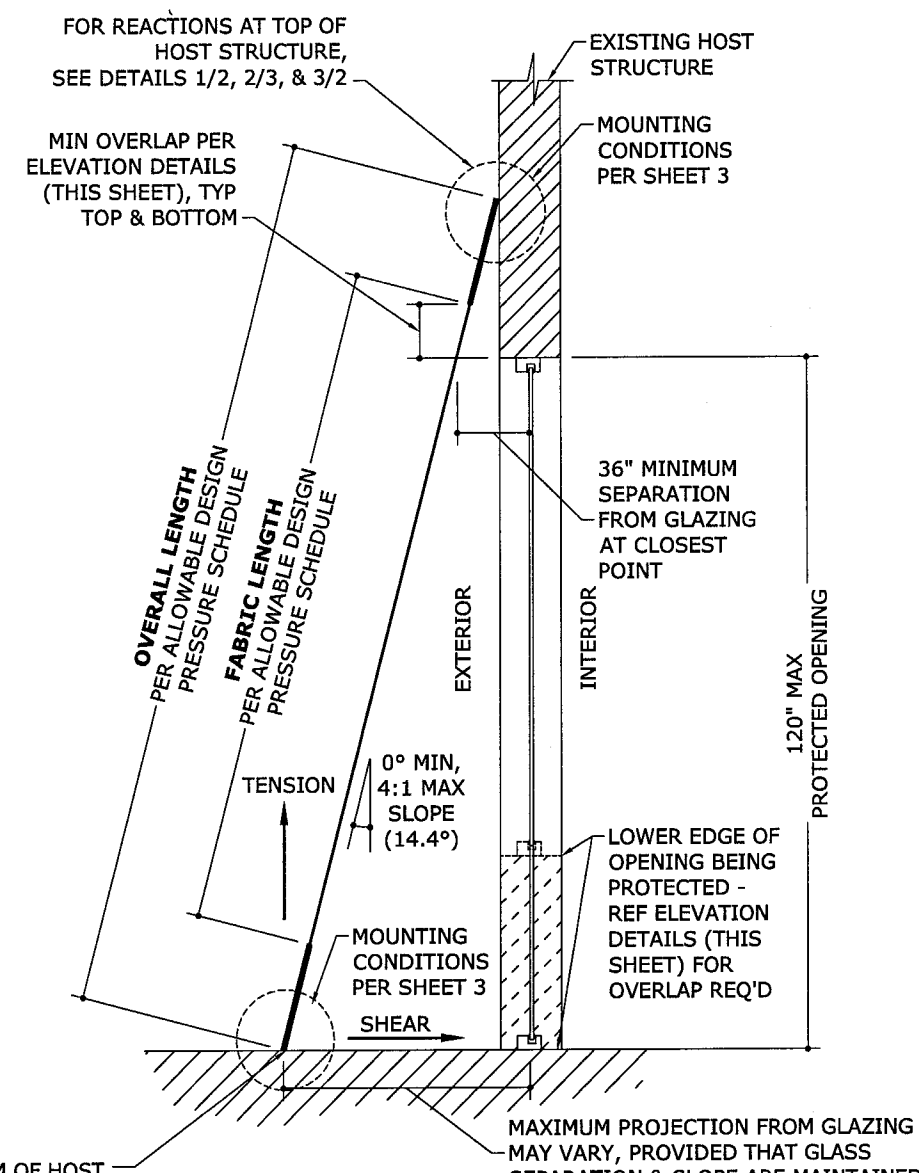
1 ROPE MOUNT, WITH GROMMETS
2 N.T.S. EXTER ELEV



2 ROPE MOUNT, WITH CLAMPS
2 N.T.S. EXTER ELEV



3 STUD ANGLE OR DIRECT MOUNT, WITH GROMMETS
2 N.T.S. EXTER ELEV



4 TYPICAL SECTION
2 N.T.S. VERT SECTION

REACTIONS AT BOTTOM OF HOST STRUCTURE FOR DIRECT MOUNT*:

8' HEIGHT:
TENSION: 474 LBS/FT
SHEAR: 222 LBS/FT
12' HEIGHT:
TENSION: 402 LBS/FT
SHEAR: 171 LBS/FT

ENSURE 1.5 SAFETY FACTOR FOR FOUNDATION OVERTURING AND SLIDING

*FOR STUDDED ANGLE MOUNT REACTIONS AT BOTTOM OF HOST STRUCTURE, SEE DETAILS 2/3

ALLOWABLE DESIGN PRESSURE SCHEDULE

MOUNTING CONDITION	FABRIC CONNECTOR	FABRIC LENGTH	OVERALL LENGTH	ALLOWABLE PRESSURE
ROPE (REF DETAILS 1/2, 2/2, 3/3, 4/3, & 1/4)	CLAMPS OR CLAMP/ GROMMET COMBINATION	8' - 0"	12' - 0"	72.5 PSF
		12' - 4"	12' - 10"	48.3 PSF
	GROMMETS ONLY	8' - 0"	12' - 0"	96.7 PSF
		12' - 4"	12' - 10"	48.3 PSF
DIRECT MOUNT OR STUD ANGLE (REF DETAILS 3/2, 1/3, & 2/3)	GROMMETS ONLY	8' - 0"	12' - 0"	96.7 PSF
		12' - 4"	12' - 10"	48.3 PSF

NOTE: MINIMUM ALLOWABLE PRESSURE FROM TOP AND BOTTOM CONDITIONS SHALL BE APPLICABLE TO ENTIRE ASSEMBLY.

Approved as complying with the Florida Building Code
 Date 08/07/2008
 NOA# 08-0314-07
 Miami Date Product Control
 Division
 By: *Helmy A. Mobar*

JORGE A. POMERANTZ, P.E.
 # PE 55326

07/09/2008

INC Consultants, Inc.
 428 NW 70TH AVE., #135
 PLANTATION, FL 33317
 (954) 394-8521
 INGCONSULTANTS@YAHOO.COM
 CERT OF AUTHORIZATION #27242

CAT-5 PROTECTION. INC.
 160 S.W. 12th AVENUE, #106
 DEERFIELD BEACH, FL 33442
 www.hurricane-net.com
 CAT-5 HURRICANE NET
 IMPACT RESISTANT WIND ABATEMENT SYSTEM
 MIAMI-DADE NOTICE OF ACCEPTANCE

REMARKS	DATE
INITIAL ISSUE	03/07/08
DRWN/CHKD	JP
CL	

0108-092-1

SCALE: -
 PAGE DESCRIPTION:

By: *Helmy A. Mobar*

07/09/2008

INC Consultants, Inc.
428 NW 70TH AVE., #135
PLANTATION, FL 33317
(954) 394-8521
INGCONSULTANTS@YAHOO.COM
CERT OF AUTHORIZATION #27242

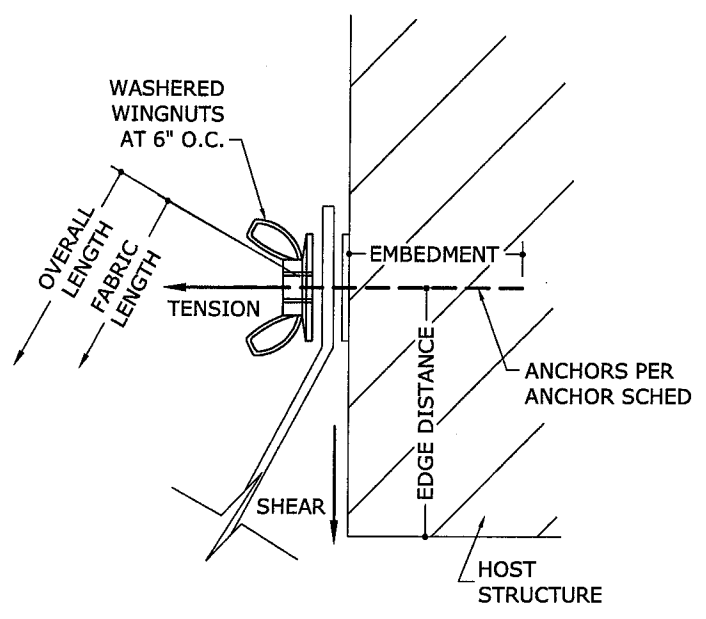
CAT-5 PROTECTION. INC.
160 S.W. 12th AVENUE, #106
DEERFIELD BEACH, FL 33442
www.hurricane-net.com
CAT-5 HURRICANE NET
IMPACT RESISTANT WIND ABATEMENT SYSTEM
MIAMI-DADE NOTICE OF ACCEPTANCE

REMARKS	DATE
INITIAL ISSUE	03/07/08
DRWN	CL
CHKD	JP

0108-092-1

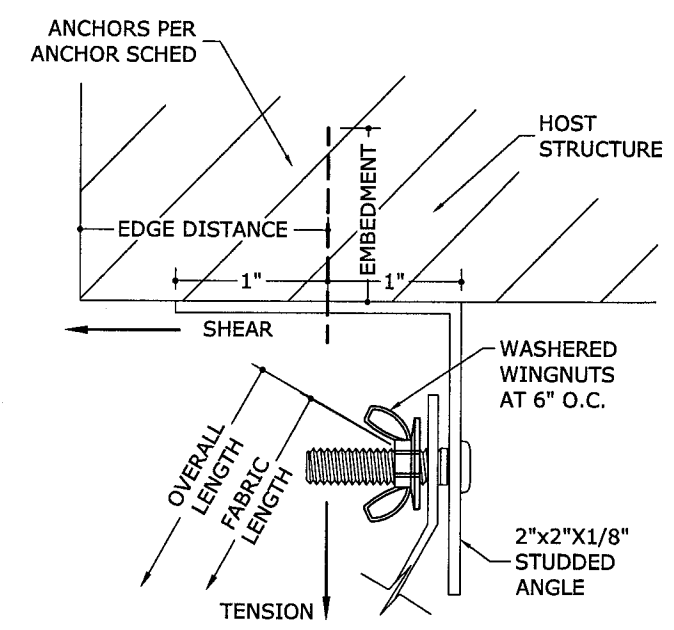
SCALE: -
PAGE DESCRIPTION:

3



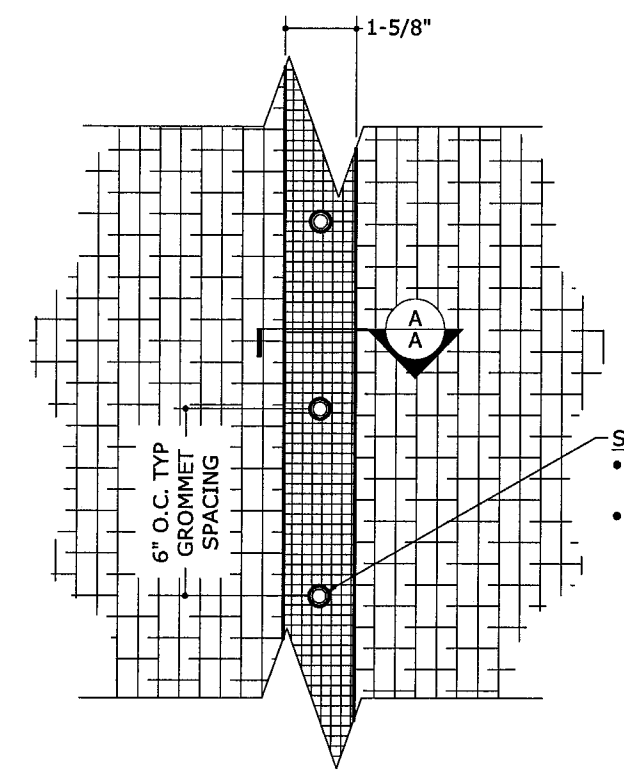
1 DIRECT MOUNT
3 N.T.S. (HEAD)

8' HEIGHT: TENSION: 222 LBS/FT SHEAR: 474 LBS/FT
12' HEIGHT: TENSION: 171 LBS/FT SHEAR: 402 LBS/FT



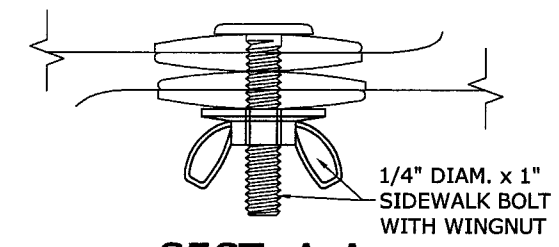
2 STUDDED ANGLE MOUNT
3 N.T.S. (HEAD OR SILL SIMILAR)

8' HEIGHT: TENSION: 1251.7 LBS/FT SHEAR: 222.0 LBS/FT
12' HEIGHT: TENSION: 1039.0 LBS/FT SHEAR: 171.0 LBS/FT



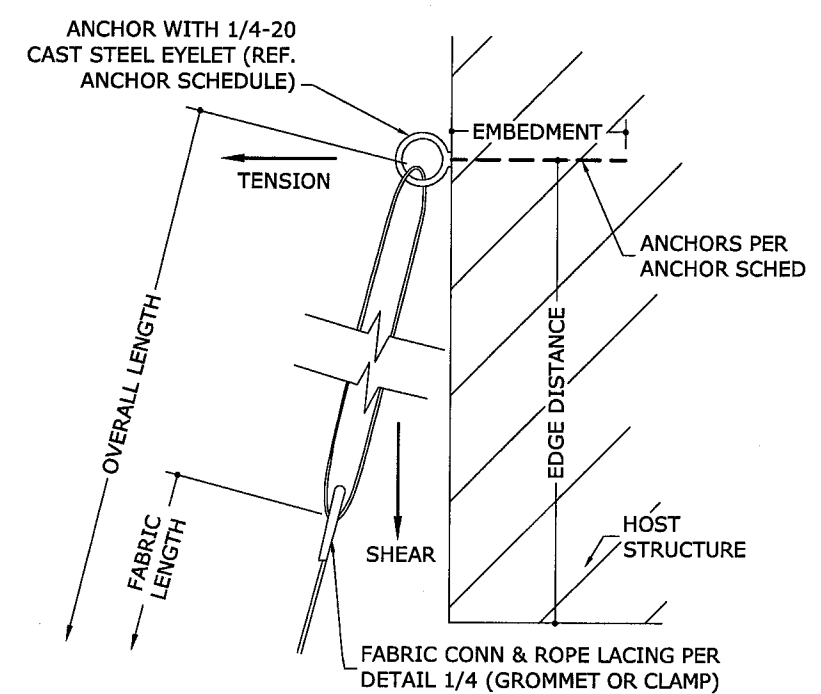
SEAM BOLT SPACING:
• 12" O.C. FOR FABRIC LENGTH UP TO 8'-0".
• 6" ON CENTER FOR FABRIC LENGTH FROM 8'-1" TO 12'-4".

5 TYPICAL BOLTED SEAM
3 N.T.S. EXTER ELEV



SECT. A-A

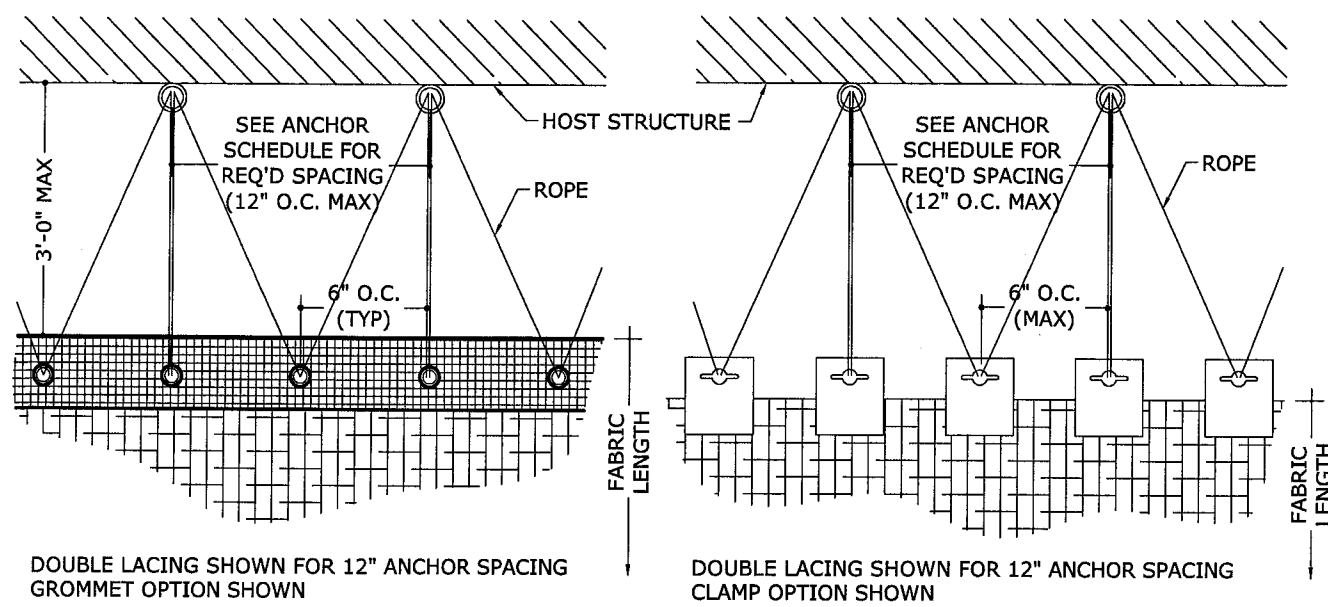
Approved as complying with the Florida Building Code
Date: 08/07/2008
NOAH 08-0314-07
Miami Dade Product Control
Division
By: *Helmut A. Miller*



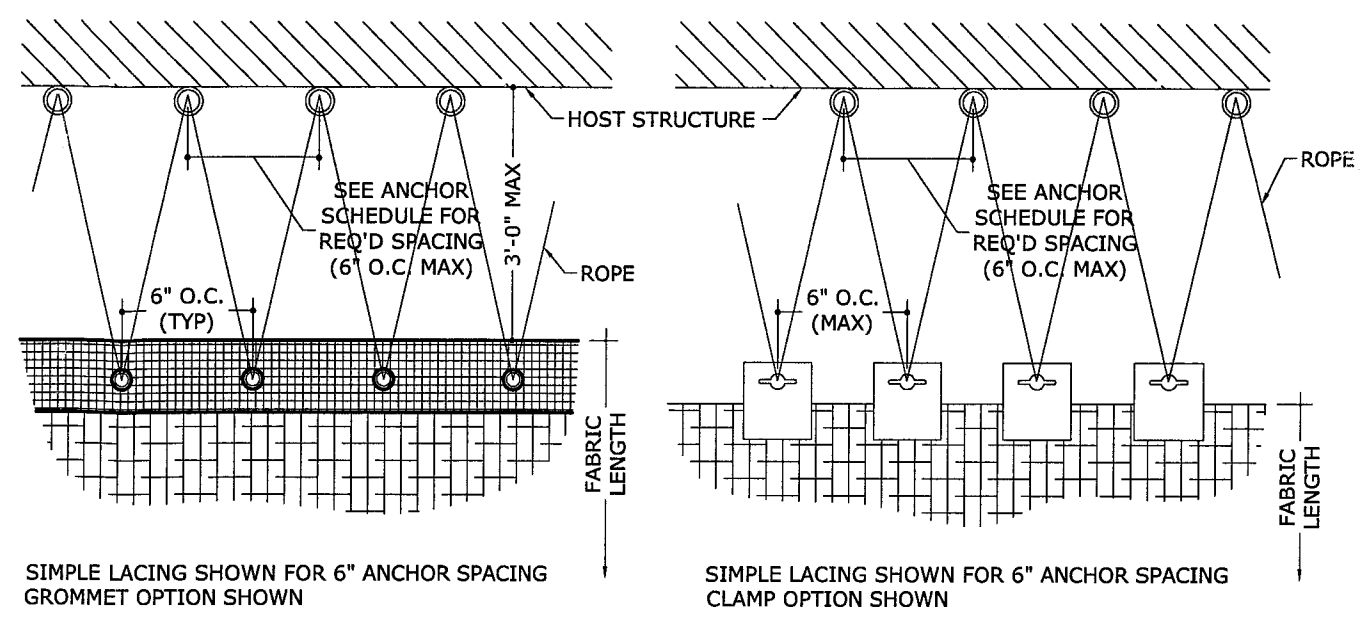
3 ROPE ATTACHMENT
3 N.T.S. (HEAD)

8' HEIGHT: TENSION: 222 LBS/FT SHEAR: 474 LBS/FT
12' HEIGHT: TENSION: 171 LBS/FT SHEAR: 402 LBS/FT

07/09/2008



FABRIC LENGTH UP TO 8'-0"



FABRIC LENGTH UP TO 12'-4"

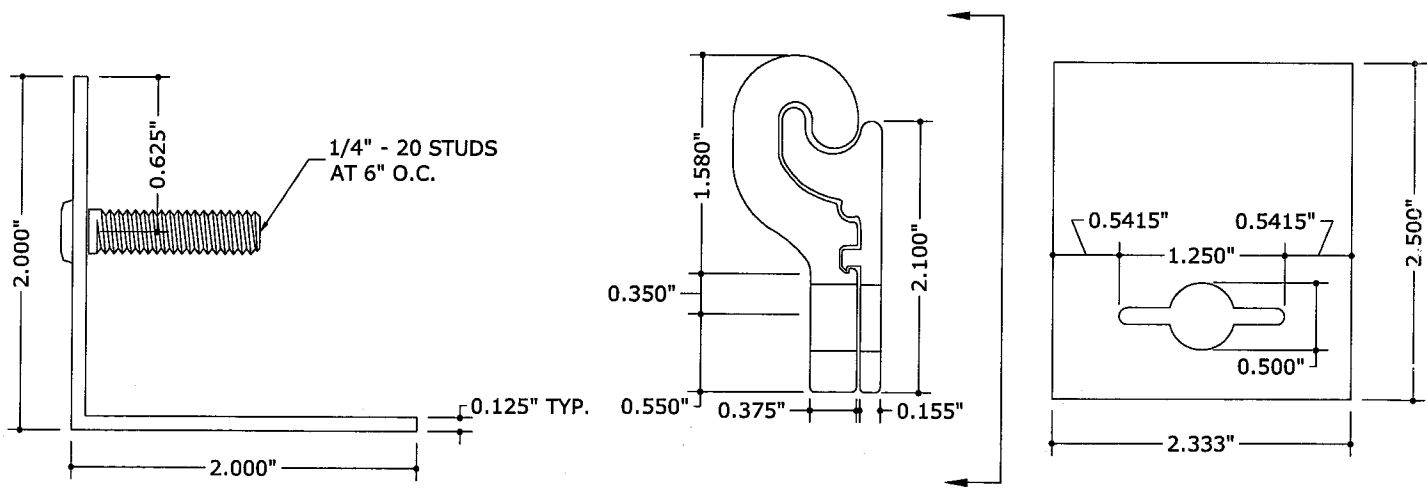
1 ROPE LACING PATTERNS
4 N.T.S. EXTER ELEV

NOTES:

- TOP & BOTTOM LACING SIMILAR.
- MOUNTING CONDITIONS MAY VARY, SEE SHEET 3 FOR DETAILS.
- FABRIC SHALL BE INSTALLED WITH EVEN TENSION ALONG ROPE LACING & WITHOUT EXCESSIVE SLACK FOR ALL CONDITIONS.
- ROPE IS EVERBILT 1/4" BRAIDED NYLON AND POLYPROYLENE.
- CLAMP EDGES ARE CONSTRUCTED WITH TWO PART NYLON 6.6 CLAMPS INSTALLED INTO A 2" WIDE FOLD BACK IN THIS EDGE OF THE NETTING MATERIAL.
- GROMMET EDGES ARE CONSTRUCTED WITH 1-1/8" Ø GROMMETS WITH A 5/8" HOLE. GROMMETS ARE INSTALLED IN THE CENTER OF 3" FOLD BACK IN THE PERIMETER OF THE NETTING MATERIAL. TRAPPED INTO THE FOLD BACK IS A FILLER OF 3" WIDE NYLON WEB STRAP (0.040" THICK). THE 3" FOLD BACK IN THE FABRIC HAD A HEAT WELD OF THE SEVERAL LAYERS 3/4" WIDE ALONG IT'S INNER AN OUTER EDGES.

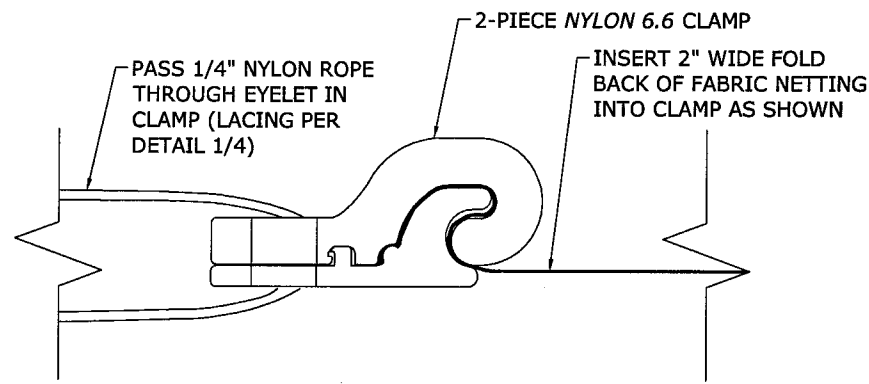
INC Consultants, Inc.
428 NW 70TH AVE., #135
PLANTATION, FL 33317
(954) 394-8521
INGCONSULTANTS@YAHOO.COM
CERT OF AUTHORIZATION #27242

CAT-5 PROTECTION. INC.
160 S.W. 12th AVENUE, #106
DEERFIELD BEACH, FL 33442
www.hurricane-net.com
CAT-5 HURRICANE NET
IMPACT RESISTANT WIND ABATEMENT SYSTEM
MIAMI-DADE NOTICE OF ACCEPTANCE



1 STUDDED ANGLE
N.T.S. 6063-T6 ALUM.

2 2-PIECE CLAMP
N.T.S. NYLON 6.6



2 TYPICAL CLAMP INSTALLATION
N.T.S. TYP SECTION

Approved as complying with the
Florida Building Code
Date 08/07/2008
NOAH 08-0314.07
Miami Dade Product Control
Division
By *Helmy A. Helmy*

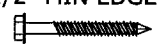

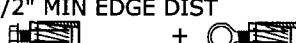


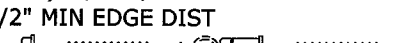


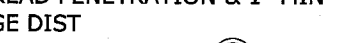
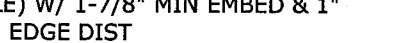
REMARKS	DATE
INITIAL ISSUE	03/07/08
DRWN CHKD	
CL JP	

0108-092-1

SCALE:
PAGE DESCRIPTION:

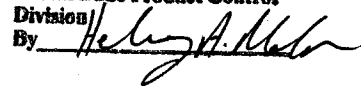
ANCHOR SCHEDULE

NOTE: SPACINGS SHOWN BELOW ARE FOR ANCHORS TO HOST STRUCTURE ONLY (i.e. EYELET ANCHORS, DIRECT MOUNT ANCHORS, & STUDDED ANGLE ANCHORS). SEE DETAIL 1/4 FOR GROMMET OR CLAMP SPACING.

HOST STRUCT	ANCHOR	FABRIC LENGTH UP TO 8'-0"				FABRIC LENGTH UP TO 12'-4"			
		FABRIC CONNECTOR: GROMMETS ONLY (NO CLAMPS)		FABRIC CONNECTOR: CLAMPS OR CLAMP/GROMMET COMBINATION		FABRIC CONNECTOR: ANY COMBINATION OF CLAMPS &/OR GROMMETS			
		DESIGN PRESSURE	MAXIMUM SPACING	DESIGN PRESSURE	MAXIMUM SPACING	DESIGN PRESSURE	MAXIMUM SPACING	DESIGN PRESSURE	MAXIMUM SPACING
CONCRETE	1/4" TAPCON (ELCO OR ITW) WITH 1-3/4" EMBED (3320psi MIN CONC) & 2-1/2" MIN EDGE DIST 	24.2 PSF	11.5"	36.3 PSF	8.2"	24.9 PSF	6.0"		
		48.4 PSF	6.8"	54.4 PSF	5.8"	37.3 PSF	5.6"		
		72.5 PSF	4.8"	72.5 PSF	4.6"	49.8 PSF	4.6"		
		96.7 PSF	3.7"						
	1/4" ELCO PANELMATE (MALE, FEMALE) W/ 1-3/4" MIN EMBED (3350psi MIN CONC) & 2-1/2" MIN EDGE DIST 	24.2 PSF	12.0"	36.3 PSF	9.2"	24.9 PSF	6.0"		
		48.4 PSF	7.7"	54.4 PSF	6.5"	37.3 PSF	6.0"		
		72.5 PSF	5.4"	72.5 PSF	5.2"	49.8 PSF	5.1"		
		96.7 PSF	4.2"						
	1/4-20 POWERS CALK-IN WITH 7/8" MIN EMBED (3000psi MIN CONC) & 2-1/2" MIN EDGE DIST 	24.2 PSF	12.0"	36.3 PSF	8.8"	24.9 PSF	6.0"		
		48.4 PSF	7.3"	54.4 PSF	6.2"	37.3 PSF	6.0"		
		72.5 PSF	5.1"	72.5 PSF	5.0"	49.8 PSF	4.9"		
		96.7 PSF	4.0"						
1/2-13 POWERS CALK-IN WITH 1-1/2" MIN EMBED (3000psi MIN CONC) & 6" MIN EDGE DIST 	24.2 PSF	12.0"	36.3 PSF	12.0"	24.9 PSF	6.0"			
	48.4 PSF	12.0"	54.4 PSF	12.0"	37.3 PSF	6.0"			
	72.5 PSF	11.3"	72.5 PSF	10.9"	49.8 PSF	6.0"			
	96.7 PSF	8.8"							
HOLLOW BLOCK	1/4" TAPCON (ELCO OR ITW) WITH 1-1/4" EMBEDMENT & 2-1/2" MIN EDGE DISTANCE 	24.2 PSF	4.5"	36.3 PSF	3.2"	24.9 PSF	3.0"		
	1/4" ELCO PANELMATE (MALE or FEMALE) W/ 1-1/4" MIN EMBED & 2-1/2" MIN EDGE DIST 	24.2 PSF	6.5"	36.3 PSF	4.6"	24.9 PSF	4.3"		
		48.4 PSF	3.8"	54.4 PSF	3.3"	37.3 PSF	3.2"		
	1/4-20 POWERS CALK-IN WITH 7/8" MINIMUM EMBEDMENT & 2-1/2" MIN EDGE DISTANCE 	24.2 PSF	4.5"	36.3 PSF	3.2"	24.9 PSF	3.0"		
WOOD	3/8" LAG SCREW WITH 2-1/2" MIN THREAD PENETRATION & 1" MIN EDGE DIST 	24.2 PSF	11.2"	36.3 PSF	8.1"	24.9 PSF	6.0"		
		48.4 PSF	7.1"	54.4 PSF	5.9"	37.3 PSF	5.7"		
		72.5 PSF	5.1"	72.5 PSF	4.9"	49.8 PSF	4.8"		
	1/2" LAG SCREW WITH 2-1/2" MIN THREAD PENETRATION & 1" MIN EDGE DIST 	24.2 PSF	12.0"	36.3 PSF	9.6"	24.9 PSF	6.0"		
		48.4 PSF	8.3"	54.4 PSF	7.0"	37.3 PSF	6.0"		
		72.5 PSF	6.1"	72.5 PSF	5.8"	49.8 PSF	5.7"		
	1/4" ELCO PANELMATE (FEMALE, MALE) W/ 1-7/8" MIN EMBED & 1" MIN EDGE DIST 	24.2 PSF	12.0"	36.3 PSF	10.1"	24.9 PSF	6.0"		
		48.4 PSF	8.3"	54.4 PSF	7.1"	37.3 PSF	6.0"		
		72.5 PSF	5.8"	72.5 PSF	5.6"	49.8 PSF	5.5"		
	96.7 PSF	4.5"							

ANCHOR NOTES:

- SEE ALLOWABLE DESIGN PRESSURE SCHEDULE FOR ALLOWABLE SPANS, MOUNTING CONDITIONS, FABRIC CONNECTORS, AND PRESSURES.
- "COMBINATIONS" OF FABRIC CONNECTORS REFER TO TOP & BOTTOM COMBINATIONS AND SIDE-BY-SIDE COMBINATIONS OF FABRIC CONNECTORS.
- ANCHORS SHALL BE INSTALLED IN ACCORDANCE WITH MANUFACTURERS' RECOMMENDATIONS.
- MINIMUM EMBEDMENT SHALL BE AS NOTED IN ANCHOR SCHEDULE. MINIMUM EMBEDMENT AND EDGE DISTANCE EXCLUDES STUCCO, FOAM, BRICK, AND OTHER WALL FINISHES.
- WHERE EXISTING STRUCTURE IS WOOD FRAMING, EXISTING CONDITIONS MAY VARY. FIELD VERIFY THAT FASTENERS ARE INTO ADEQUATE WOOD FRAMING MEMBERS, NOT INTO PLYWOOD.
- ANCHOR SCHEDULE APPLIES FOR ALL PRODUCTS CERTIFIED HEREIN, BUT ONLY PROVIDES MAXIMUM ALLOWABLE ANCHOR SPACING. MAXIMUM ALLOWABLE SPANS AND PRESSURES INDICATED IN SPAN SCHEDULE SHALL APPLY.
- MACHINE SCREWS SHALL HAVE MINIMUM OF 1/2" ENGAGEMENT OF THREADS IN BASE ANCHOR AND MAY HAVE EITHER A PAN HEAD, TRUSS HEAD, EYELET HEAD OR WAFER HEAD ("SIDEWALK BOLT") U.N.O.
- DESIGNATES ANCHOR CONDITIONS WHICH ARE NOT ACCEPTABLE FOR USE.
- * DESIGNATES REMOVABLE ANCHORS WHICH ARE APPLICABLE TO DIRECT MOUNT INSTALLATIONS.
- + DESIGNATES ANCHORS WITH EYELET HEAD FOR USE WITH ROPE MOUNT. THE EYELET DIAMETER IS 1-1/8" WITH 3/4" Ø OPENING. THE EYEBOLT IS STEEL STAMP WITH CLOSED LOOP. THE BOLT PORTION IS 1/4"-20x1" WITH 7/16" WIDE SHOULDER BETWEEN THE EYE AND THE BOLT.

Approved as complying with the Florida Building Code
 Date: 08/07/2008
 NOA# 08-0314-07
 Miami Dade Product Control
 Division:
 By: 

07/09/2008

INC Consultants, Inc.
 428 NW 70TH AVE., #135
 PLANTATION, FL 33317
 (954) 394-8521
 INGCONSULTANTS@YAHOO.COM
 CERT OF AUTHORIZATION #27242

CAT-5 PROTECTION, INC.
 160 S.W. 12th AVENUE, #106
 DEERFIELD BEACH, FL 33442
 www.hurricane-net.com
 CAT-5 HURRICANE NET
 IMPACT RESISTANT WIND ABATEMENT SYSTEM
 MIAMI-DADE NOTICE OF ACCEPTANCE

REMARKS	DATE
INITIAL ISSUE	03/07/08
DRWN	
CHKD	
CL	
IP	

0108-092-1

SCALE:
PAGE DESCRIPTION: